

# CCT REU: Interdisciplinary Research Experience in Computational Science

## LA-SiGMA REU: Louisiana Alliance for Simulation-Guided Materials Applications REU

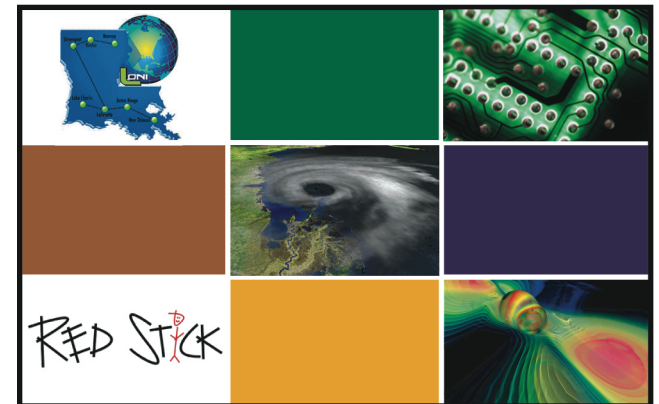
Randall Hall, Mark Jarrell, Juana Moreno, Brygg Ullmer,  
Staff: Bety Rodríguez-Milla, Leigh Townsend, Kathy Traxler



CENTER FOR COMPUTATION  
& TECHNOLOGY



Louisiana Alliance for Simulation-Guided Materials Applications



CCT: Center for Computation & Technology



# REU

- Welcome
- Introductions

# REU Meetings

- Tuesdays, 9 a.m. – 12 p.m., mentor presentations, J338 or 307 Frey
- Fridays, 3:30 p.m. – 5 p.m., student updates, J338 or 307 Frey

# REU Meetings

- Tuesdays, 9 a.m. – 12 p.m., on special occasions at 101A Life Sciences Annex Auditorium
  - June 7: Journal Editor Seminar
  - June 21: 101 LSA or J338
  - July 26: Grad School Representatives

# REU Training

- Introduction to HPC
  - Wednesdays, 10:00 a.m. - 12:00 p.m. in 307 Frey
- C Programming
  - Mondays and Thursdays  
10 a.m. - 12:00 p.m. in 307 Frey

# REU Presentations

- Initial Presentations (Project Outline):
  - June 13, 9 a.m. – 12 p.m., 307 Frey
  - Informal ~10 min presentation
- *Final Presentations:*
  - July 20, time TBD, 307 Frey
  - Formal ~10 min powerpoint presentation
  - Ed Seidel from NSF will give a talk to the students

# REU SURF

- Summer Undergraduate Research Forum, July 28, open to the public
- Poster presentation from all REU students in campus
- Selected posters will be awarded a travel grant for international and national conferences

# REU Blog

<http://reucct.blogspot.com/>

- Short weekly blog entry about research
  - What you did
  - What you are planning to do
  - What worked and what did not worked
  - Can also post questions or problems that mentors or other students might be able to help you solve
  - By invitation-only blog



# REU Surveys

- CCT Students:
  - Start and end of program, [surveymonkey.com](https://www.surveymonkey.com)
  - From the NSF CISE, nationwide, goes to UNC
- LA-SiGMA Students:
  - End of the program survey
  - SURE III, nationwide, based at Grinnell College
- Longitudinal: keep in touch
- Mentors will fill surveys, too

# REU: other Activities

- Fast Forward to your Future! – June 7
- NOLA walking tour – June 11
- Softball game and lunch– June 15
- CAVE at Southern University – June 30
- Physics & Astronomy Night – July 7
- LIGO – July 16
- 3D Viz Lab
- Swamp tour? Tiki Tubing? (on our own)

# REU Calendar

- Calendar of activities at <http://reu.cct.lsu.edu>

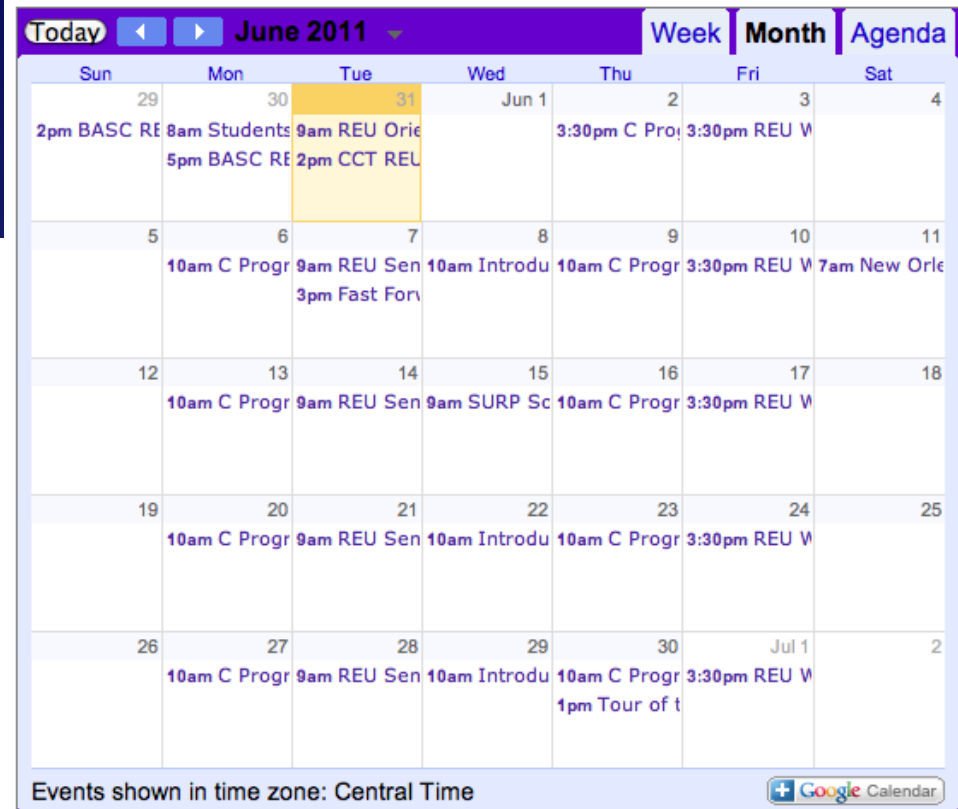


LSU CENTER FOR COMPUTATION & TECHNOLOGY

Interdisciplinary Research Experience in Computational Sciences

- Home
- Program
- Apply
- Projects
- Calendar
- People

REU Calendar of Events



Today June 2011 Week Month Agenda

Sun	Mon	Tue	Wed	Thu	Fri	Sat
29 2pm BASC RE	30 8am Students 5pm BASC RE	31 9am REU Ori 2pm CCT REU	Jun 1	2 3:30pm C Pro	3 3:30pm REU W	4
5	6 10am C Progr	7 9am REU Sen 3pm Fast For	8 10am Introdu	9 10am C Progr	10 3:30pm REU W	11 7am New Orle
12	13 10am C Progr	14 9am REU Sen	15 9am SURP Sc	16 10am C Progr	17 3:30pm REU W	18
19	20 10am C Progr	21 9am REU Sen	22 10am Introdu	23 10am C Progr	24 3:30pm REU W	25
26	27 10am C Progr	28 9am REU Sen	29 10am Introdu	30 10am C Progr 1pm Tour of t	Jul 1 3:30pm REU W	2

Events shown in time zone: Central Time

Google Calendar

# REU Reminders

- Students should get their LSU ID card asap
- Mentors: doodle poll for seminars and Friday updates
- Mailing address:
  - 216 Johnston Hall
  - Louisiana State University
  - Baton Rouge, LA, 70803



CENTER FOR COMPUTATION  
& TECHNOLOGY

LA-SIGMA  
Louisiana Alliance for Simulation-Guided Materials Applications

# Questions?

CCT: Center for Computation & Technology