

The background of the slide is a blurred image of a musical score. A pencil is visible, pointing to a specific staff of music. The text is overlaid on this background.

CATS: Crowdsourcing the Audio Transcription of Songs: Designing a User Interface to Facilitate Large Scale Audio Data Correction

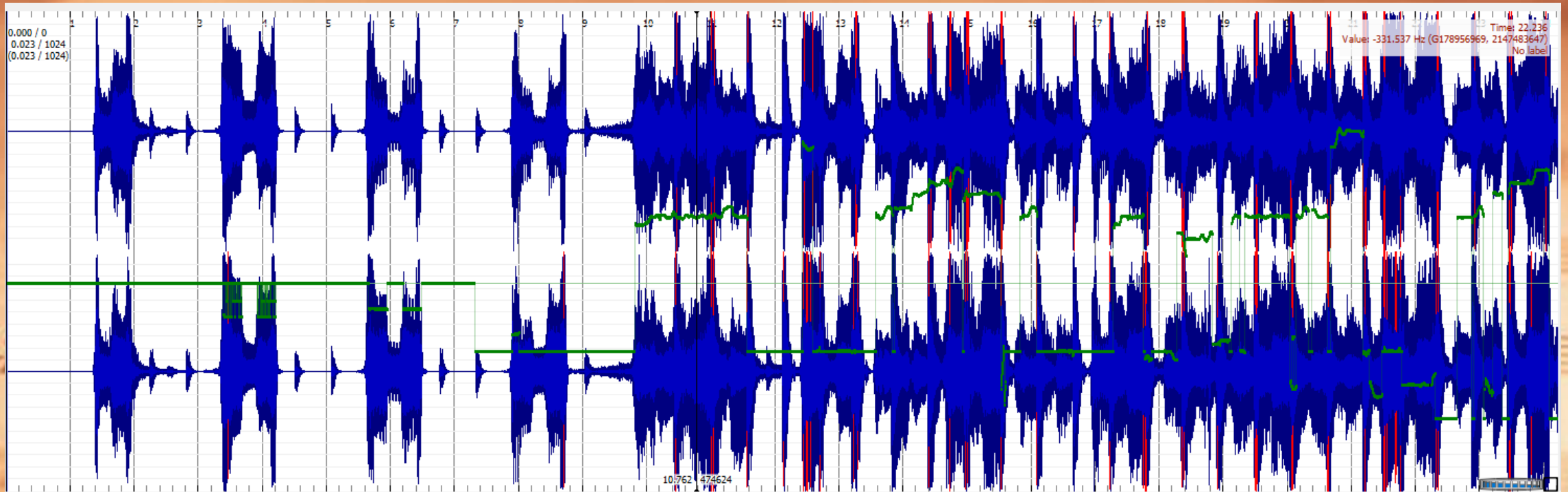
Indira Avendano

Mentors: Jesse Allison and Daniel Shanahan

Center for Computation & Technology

Music Information Retrieval

- Midi file accessed from Sonic Visualizer Silvet Note Transcription Plug-In:



Interactive Piano Roll

Choose File No file chosen

Save Modifications

Save Data

Play Selected Region

Stop Original Audio

Add A Phrase

X-axis: Y-axis:

Audio ON/OFF:

Generate Phrase

Generate Note

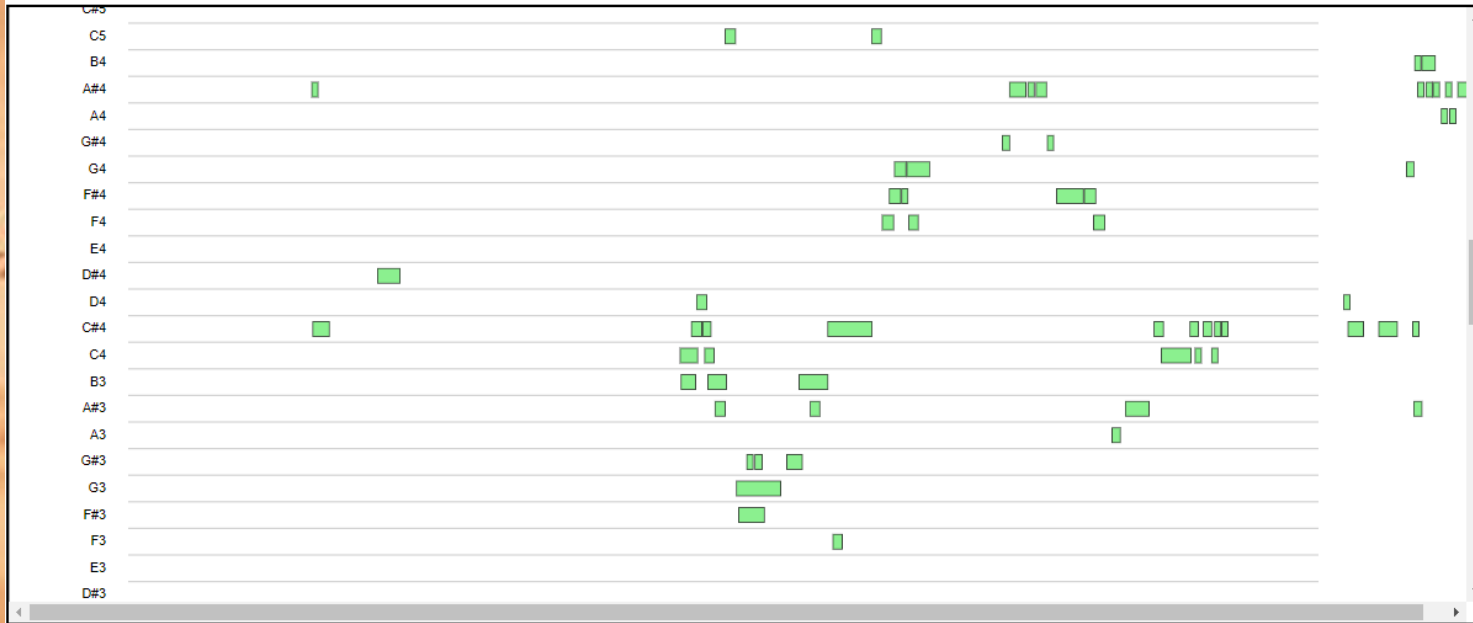
New Note Start Time

New Note Pitch

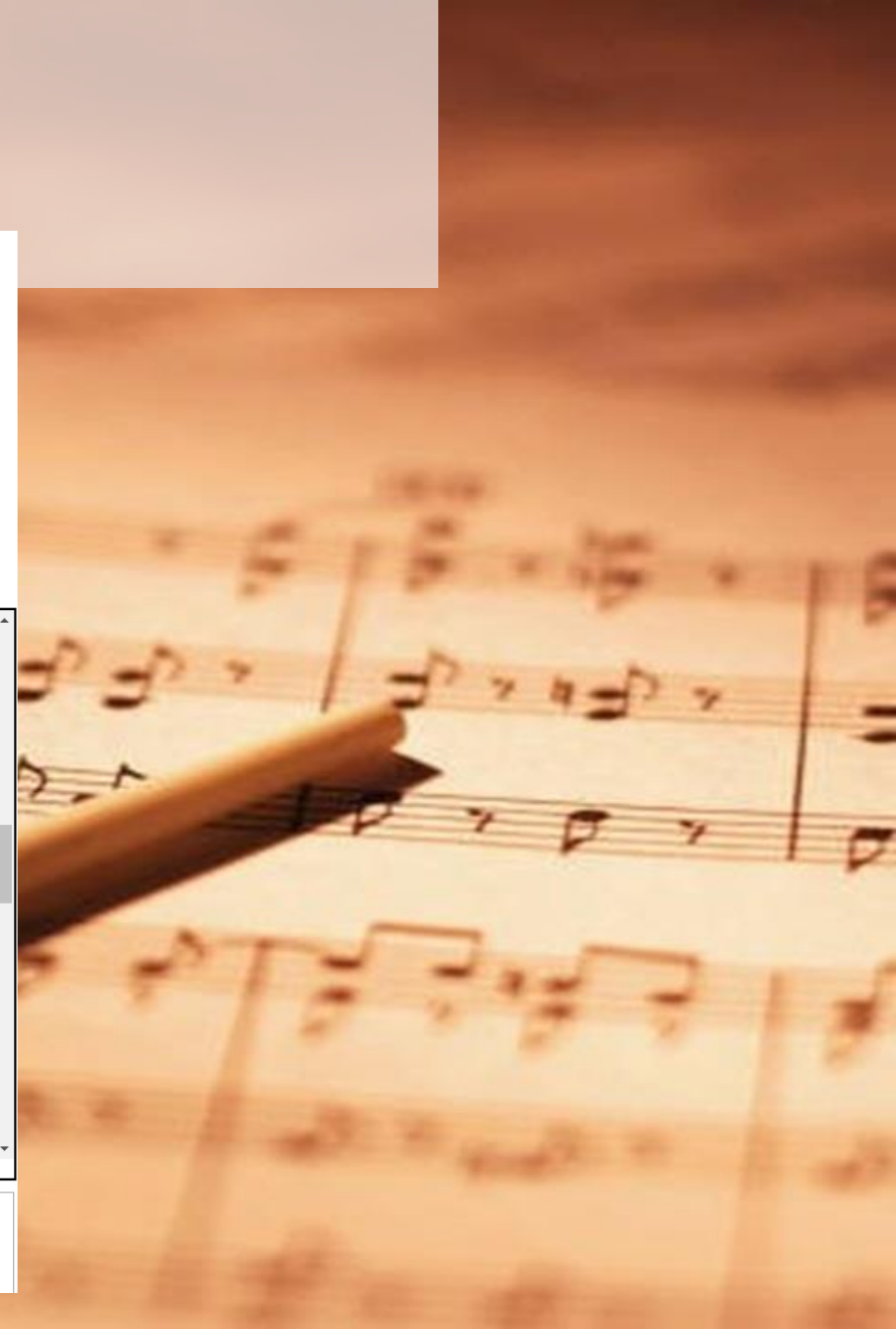
New Note Duration

New Note Lane

New Phrase

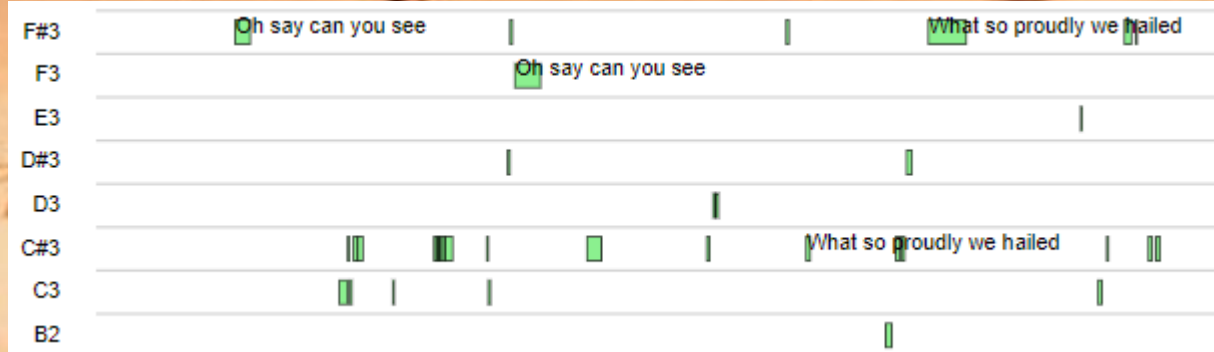


0 20 40 60 80 100 120 140



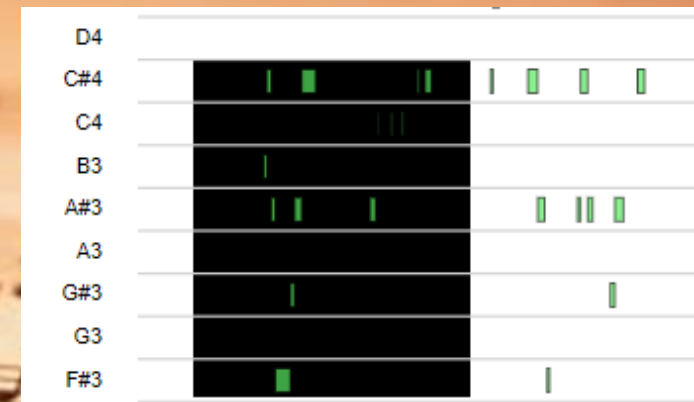
Interactive Piano Roll Tools

- Steps to Append Phrase Markers on Piano Roll and create Array of Regions:
 1. Select region with brush
 2. Click “Add Phrase” button
 3. Keys 0-9 are assigned phrases 1-10

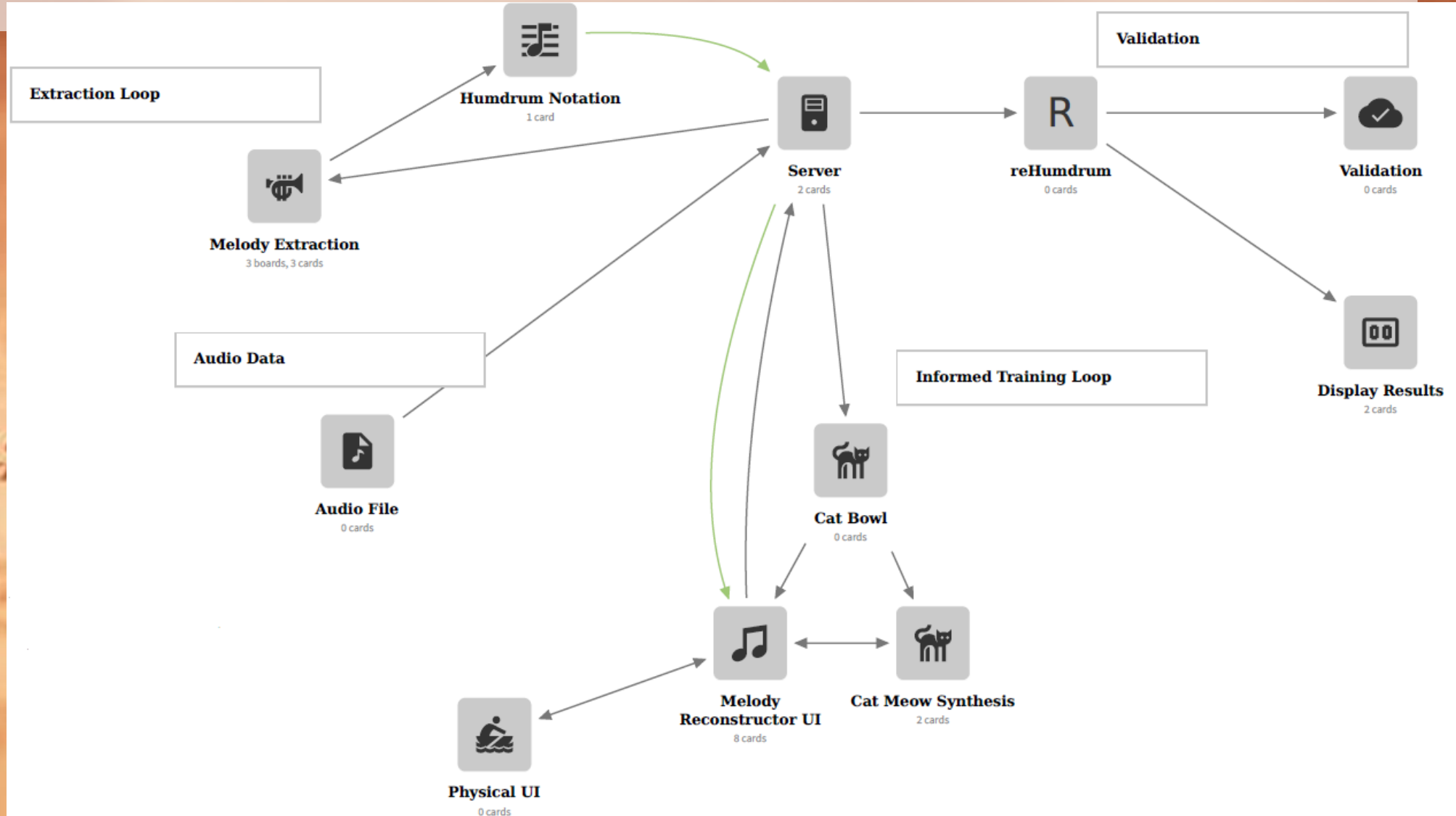


- Region selected for Playback:

PlaySelectedRegion



Project Outline



Acknowledgements

- "This material is based upon work supported by the National Science Foundation under award OCI-1560410 with additional support from the Center for Computation & Technology at Louisiana State University.



- Contact Information:
 - indirajhenny@knights.ucf.edu



Questions?